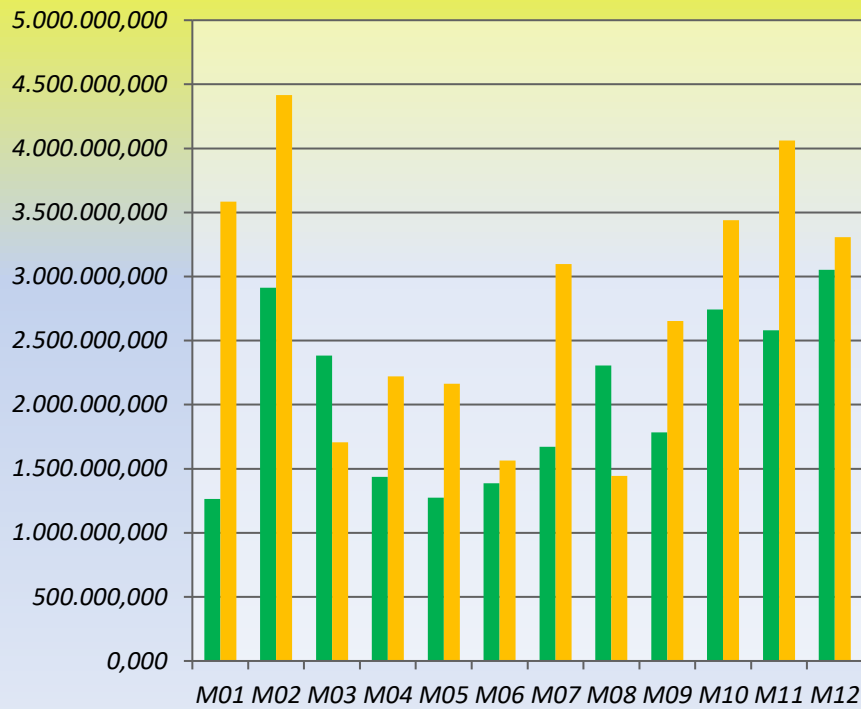


Elproduktion 2021-2022

For de 4 Siemens-møller
(angivet i kWh)

■ 2021
■ 2022



	2021	2022
M01	1.264.984,674	3.585.452,603
M02	2.913.129,415	4.414.645,380
M03	2.382.103,261	1.707.003,479
M04	1.437.376,025	2.220.535,998
M05	1.274.148,952	2.163.648,934
M06	1.387.802,295	1.564.237,642
M07	1.672.348,160	3.098.497,617
M08	2.306.857,432	1.442.908,802
M09	1.782.701,984	2.652.525,339
M10	2.741.995,461	3.439.347,040
M11	2.580.387,953	4.062.509,031
M12	3.052.484,996	3.307.697,093
	24.796.320,608	33.659.008,958