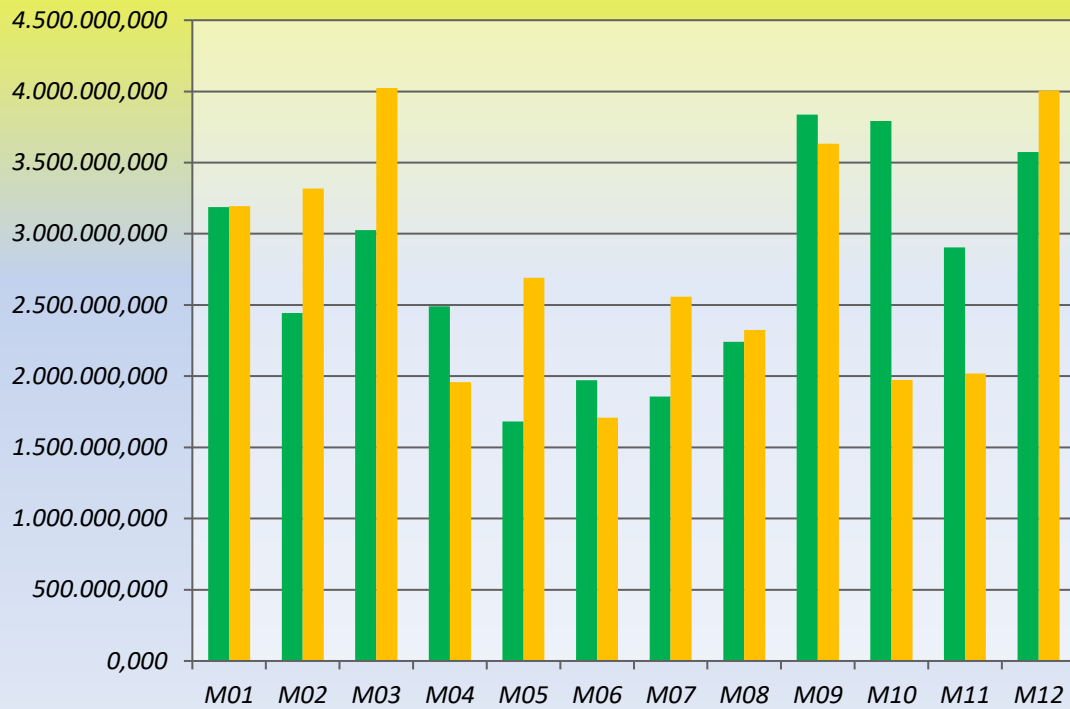


Elproduktion 2018-2019

For de 4 Siemens-møller
(angivet i kWh)

■ 2018
■ 2019



	2018	2019
M01	3.186.904,692	3.194.160,430
M02	2.443.504,432	3.319.029,620
M03	3.025.849,039	4.024.697,955
M04	2.491.002,348	1.957.984,256
M05	1.681.778,952	2.691.974,055
M06	1.972.655,376	1.708.413,871
M07	1.856.578,224	2.557.314,150
M08	2.240.853,774	2.324.671,937
M09	3.836.135,162	3.632.437,222
M10	3.791.768,030	1.973.834,363
M11	2.903.342,830	2.018.348,089
M12	3.574.884,460	4.005.189,543
	33.005.257,319	33.408.055,491