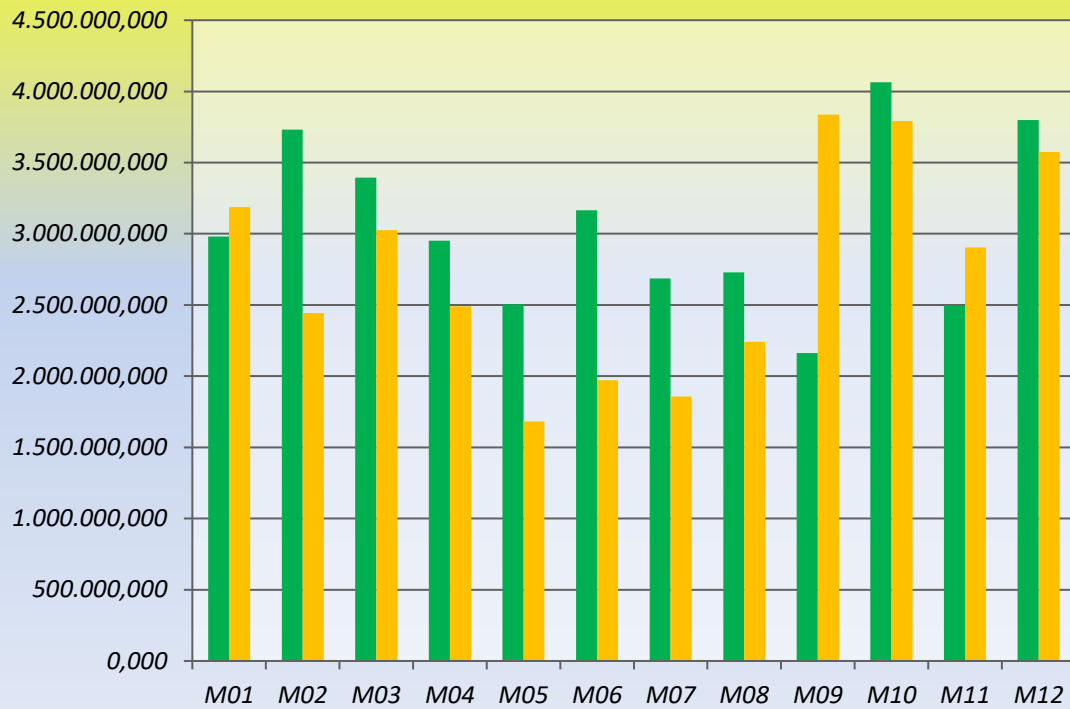


Elproduktion 2017-2018

For de 4 Siemens-møller
(angivet i kWh)

■ 2017
■ 2018



	2017	2018
M01	2.981.466,522	3.186.904,692
M02	3.731.496,756	2.443.504,432
M03	3.394.342,343	3.025.849,039
M04	2.951.836,615	2.491.002,348
M05	2.504.652,890	1.681.778,952
M06	3.165.894,815	1.972.655,376
M07	2.685.604,596	1.856.578,224
M08	2.728.332,281	2.240.853,774
M09	2.162.449,643	3.836.135,162
M10	4.063.504,917	3.791.768,030
M11	2.498.087,784	2.903.342,830
M12	3.799.291,577	3.574.884,460
	36.666.960,739	33.005.257,319